

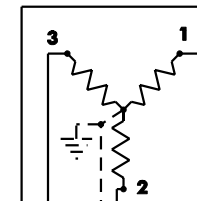
OVERHEAD 3Ø FOUR-WIRE WYE SOCKET METERING

120/208V-CLASS 200-RATING 72KVA ON BALANCED LOAD
277/480V-CLASS 200-RATING 166KVA ON BALANCED LOAD

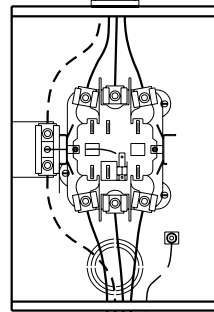
4.02.13

M420
M421D
M441D

POWER TRANSFORMER (S)



RISER OPENING WILL ACCEPT
UP TO A 2 1/2" HUB



SEVEN TERMINAL SURFACE SOCKET
METER SOCKET 0000006614
(BY CUSTOMER)

LOAD

TO GROUND
ROD

NOTES:

TERMINALS FOR MAXIMUM
350 KCMIL COPPER OR ALUMINUM
CONDUCTOR.

RISER PIPE MUST BE AN EMT,
RIGID CONDUIT OR SCHEDULE
80 PVC.

PVC WEATHER HEAD MUST
BE USED ON PVC RISER.

A GROUND ROD (NEC SUPPLEMENTAL
GROUND) MUST BE INSTALLED NEAR
THE METER SOCKET WITH AN
EQUIPMENT GROUNDING CONDUCTOR
RUNNING FROM THE GROUND
ROD TO THE GROUNDING LUG
PROVIDED IN THE METER SOCKET.

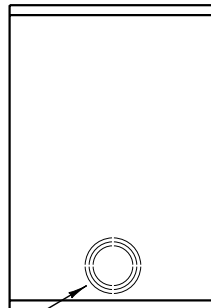
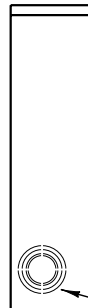
CONTRACTOR MUST USE THE
KNOCKOUTS DESCRIBED BELOW
DO NOT USE ANY OTHER KNOCKOUT
OR DRILL ANY OTHER HOLES IN THE
METER SOCKET. KNOCKOUT
LOCATIONS ON DRAWING ARE
APPROXIMATE AND NOT DRAWN
TO SCALE.

KNOCKOUT LOCATION

LEFT VIEW

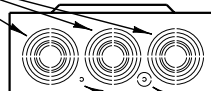
FRONT VIEW
COVER OFF

RIGHT VIEW



3" KNOCKOUTS FOR
LOAD CONDUCTORS

2 1/2" KNOCKOUTS FOR
LOAD CONDUCTORS



KNOCKOUTS FOR CONTRACTOR'S
EQUIPMENT GROUNDING CONDUCTORS