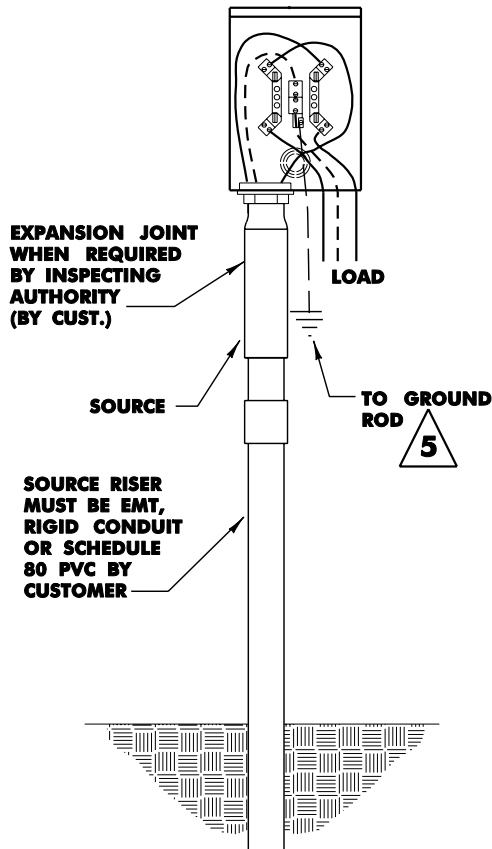


SURFACE TYPE METER SOCKET

**120/240 VOLT 3 WIRE 200 AMPERE UNDERGROUND SERVICE
"GENERAL SERVICE ONLY"**

8.04.1

M123
M123D
120/208V 1Ø 3W: M223
M223D



NOTES:

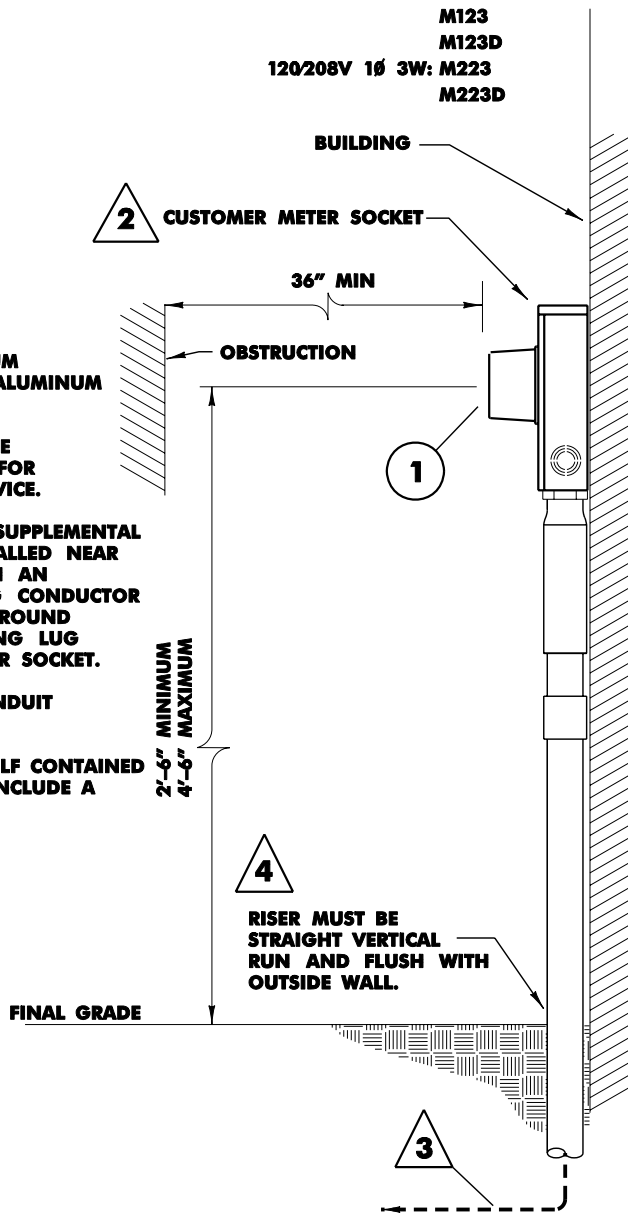
TERMINALS FOR MAXIMUM 350 KCMIL COPPER OR ALUMINUM CONDUCTOR.

METER SOCKET AVAILABLE WITH FIFTH TERMINAL. FOR THREE WIRE 120/208 SERVICE.

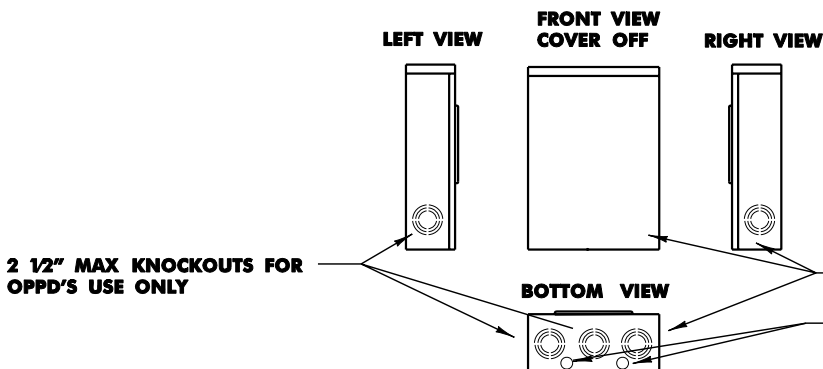
A GROUND ROD (NEC SUPPLEMENTAL GROUND) MUST BE INSTALLED NEAR THE METER SOCKET WITH AN EQUIPMENT GROUNDING CONDUCTOR RUNNING FROM THE GROUND ROD TO THE GROUNDING LUG PROVIDED IN THE METER SOCKET.

SOURCE AND LOAD CONDUIT CAN BE INTERCHANGED.

ALL GENERAL SERVICE SELF CONTAINED METER SOCKETS SHALL INCLUDE A LEVER BY-PASS.



KNOCKOUT LOCATION



CONTRACTOR MUST USE THE KNOCKOUTS DESCRIBED BELOW FOR THE LINE AND LOAD CONDUCTORS. DO NOT DRILL ANY OTHER HOLES IN THE METER SOCKET. KNOCKOUT LOCATIONS ON DRAWING ARE APPROXIMATE AND NOT DRAWN TO SCALE.

REFER TO DWG: 4.02.4

KNOCKOUTS FOR CONTRACTOR'S EQUIPMENT GROUNDING.